

# VENUE TOOLKIT

INCLUSIVE SPACES, INCLUSIVE EXPERIENCES





# CONTENTS

About Us	01
Guide to Enabling Village	02
Venues	
i. UOB Ability Hub	03-04
ii. Caregivers Pod	05
iii. Grandstand @ Nest Block	06
iv. Terrace	07
Booking Timeslot	08
Our Tenants	08
Enabling Village Tour	09
Directory Map	10



## ABOUT US

A modern retreat surrounded by luxuriant greenery, the Enabling Village offers meeting spaces and facilities with accessibility features.

Situated in the charming estate of Redhill, the Enabling Village is only a short drive from the bustle of Orchard Road and a five-minute walk from Redhill MRT. Whether you are planning to host a business meeting, seminar, conference, training programme, or recreational event, the Enabling Village has spaces to suit your needs.



## ACCESSIBILITY



VISITORS  
WITH LIMITED  
MOBILITY



HEARING  
AID USERS



BRAILLE  
USERS



SERVICE  
DOG USERS

## AWARDS & ACCOLADES





# YOUR GUIDE TO THE ENABLING VILLAGE

## LEGEND

-  Parking
-  Drop Off
-  Elevator
-  Restroom
-  Traffic Junction
-  Pedestrian Crossing
-  Bus Stop



# UOB ABILITY HUB

APPROX. 205 SQM

Comfortable and spacious, this venue serves as an ideal meeting space for various events and activities. In addition to a ceiling drop-down projection screen and a ceiling-mounted projector, wide-screen monitors located near the theatre-style seating offer a closer view of the front screen. Refreshments can be conveniently served in the elegant foyer just outside the hall.



## DETAILS

### Seating Layout Capacity

Seminar: up to 200 pax (without stage)  
up to 160 pax (with stage)  
Cluster: up to 96 pax (with tables)  
U-Shape: up to 40 pax

## SUITABLE FOR

- Presentations
- Lectures / Briefings
- Workshop
- Sports / Recreational Events
- Retail (e.g Pop Up Events and Gift Markets)

## BOOKING TIMESLOT

Available for booking Monday - Saturday (excluding Public Holidays)

	HALF DAY	FULL DAY
Morning	8:30am to 12:30pm	8:30am to 5:30pm
Afternoon	1:30pm to 5:30pm	1:30pm to 10:30pm*
Evening	6:30pm to 10:30pm*	

\*Not available for Saturday

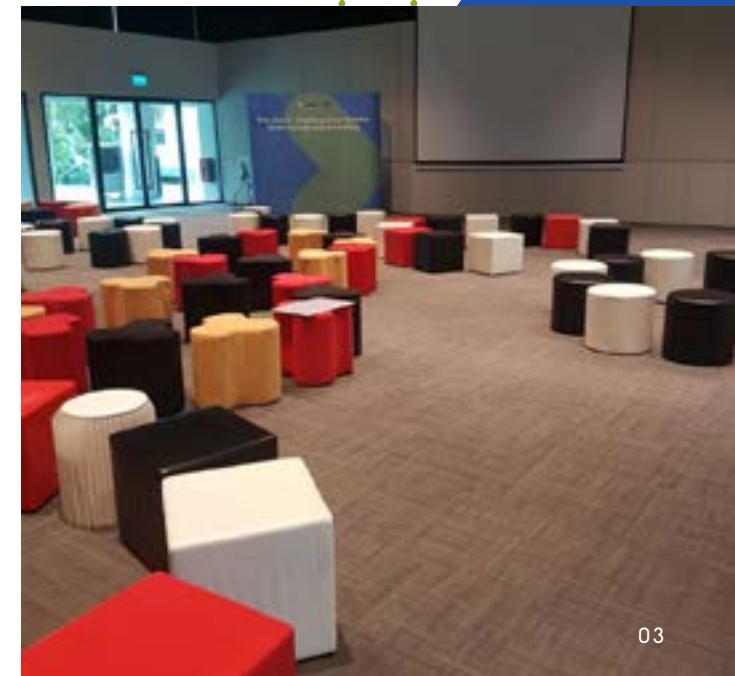
## AMENITIES

- Projector (HDMI/VGA)
- Sound System
- 2 no. of wireless microphones
- Stage & Rostrum (upon request and subject to availability)
- Presenter Table & Chair
- Laser Presentation Remote
- Hearing Loop System
- Air-conditioned
- 5 Flipcharts with a set of 4 markers

## RATES

- Half Day: \$430
- Full Day: \$860

(Prices are subject to prevailing GST)





# UOB ABILITY HUB

APPROX. 205 SQM



# CAREGIVERS POD

APPROX. 45 SQM

Introducing The Caregivers Pod, a versatile multi-functional space available for public booking. While designed with caregivers in mind for organising peer support sessions and get-togethers, it's open to everyone seeking a welcoming environment for various gatherings.



## DETAILS

### Seating Layout Capacity

- Sofa: up to 8 pax
- Seminar: up to 21 pax
- Cluster: up to 18 pax (with tables)
- Meeting Room: up to 14 pax (with tables)

## SUITABLE FOR

- Group Discussion
- Small Workshop
- Small Group Sharing
- Bonding / Recreational Activities

## BOOKING TIMESLOT

Available for booking Monday - Saturday (excluding Public Holidays)

	HALF DAY	FULL DAY
Morning	8:30am to 12:30pm	8:30am to 5:30pm
Afternoon	1:30pm to 5:30pm	1:30pm to 10:30pm*
Evening	6:30pm to 10:30pm*	

\*Not available for Saturday

## AMENITIES

- 1 TV (HDMI/VGA)
- 1 TV Remote
- 1 Whiteboard
- 5 Flipcharts with a set of 4 markers

## RATES

- Half Day: \$180
  - Full Day: \$360
- (Prices are subject to prevailing GST)





# GRANDSTAND @ NEST BLOCK

APPROX. 70 SQM

Grandstand offers a comfortable space for casual conversations, informal meetings, or laid-back socialising. Perfect for small events, workshops, or informal celebrations, our indoor venue provides a warm and inviting atmosphere to ensure your occasions are memorable. Explore the ideal setting for a casual and enjoyable experience with your group.

## DETAILS

### Seating Layout Capacity

up to 35 pax

## SUITABLE FOR

- Group Discussion
- Small Workshop
- Small Group Sharing
- Bonding / Recreational Activities

## AMENITIES

- 1 Projector & 1 Screen (HDMI/VGA)
- Sound System
- 2 no. of wireless microphones
- Laser Presentation Remote
- Hearing Loop System
- Rostrum

## RATES

- Half Day: \$180
- Full Day: \$360

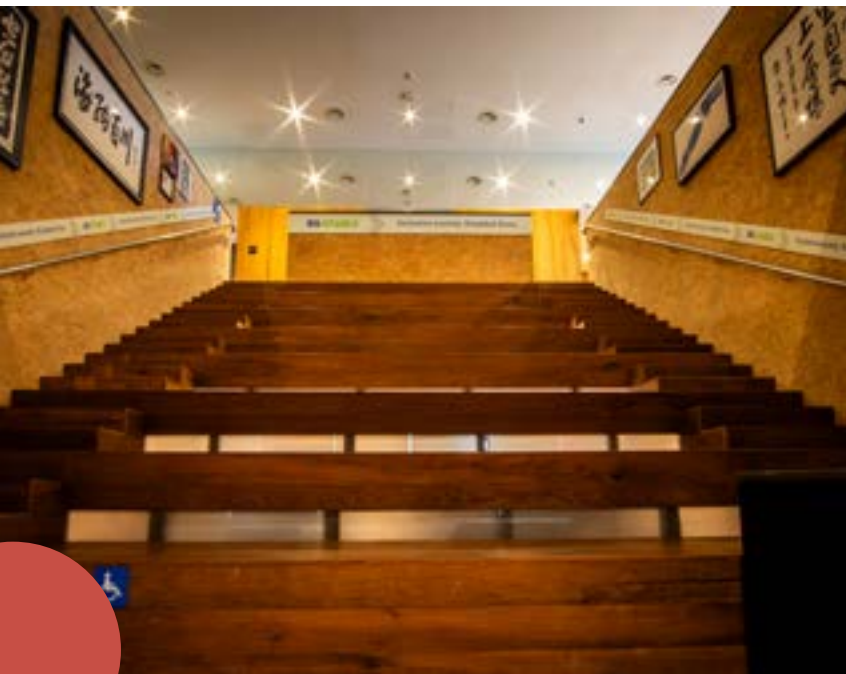
(Prices are subject to prevailing GST)

## BOOKING TIMESLOT

Available for booking Monday - Saturday (excluding Public Holidays)

	HALF DAY	FULL DAY
Morning	8:30am to 12:30pm	8:30am to 5:30pm
Afternoon	1:30pm to 5:30pm	1:30pm to 10:30pm*
Evening	6:30pm to 10:30pm*	

\*Not available for Saturday





# TERRACE

Experience the Terrace, located in the Playground block, a universally designed space where all are welcome. With a seating capacity of 150, it's the perfect venue for you to bring your events and gatherings to life!

Booking Terms & Conditions apply.

## DETAILS

### Seating Layout Capacity

up to 150 pax

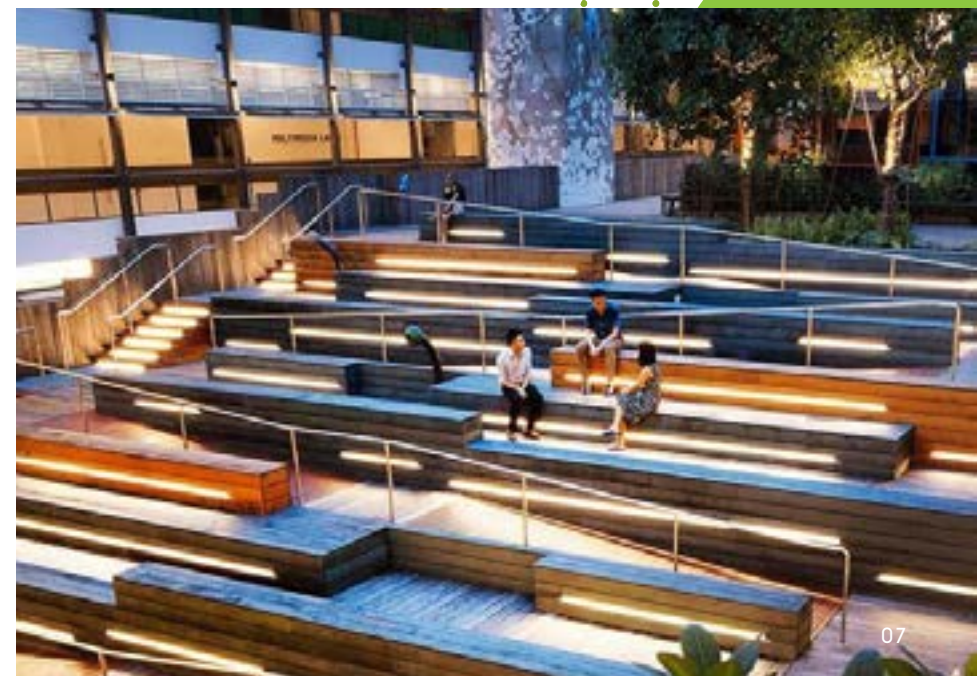
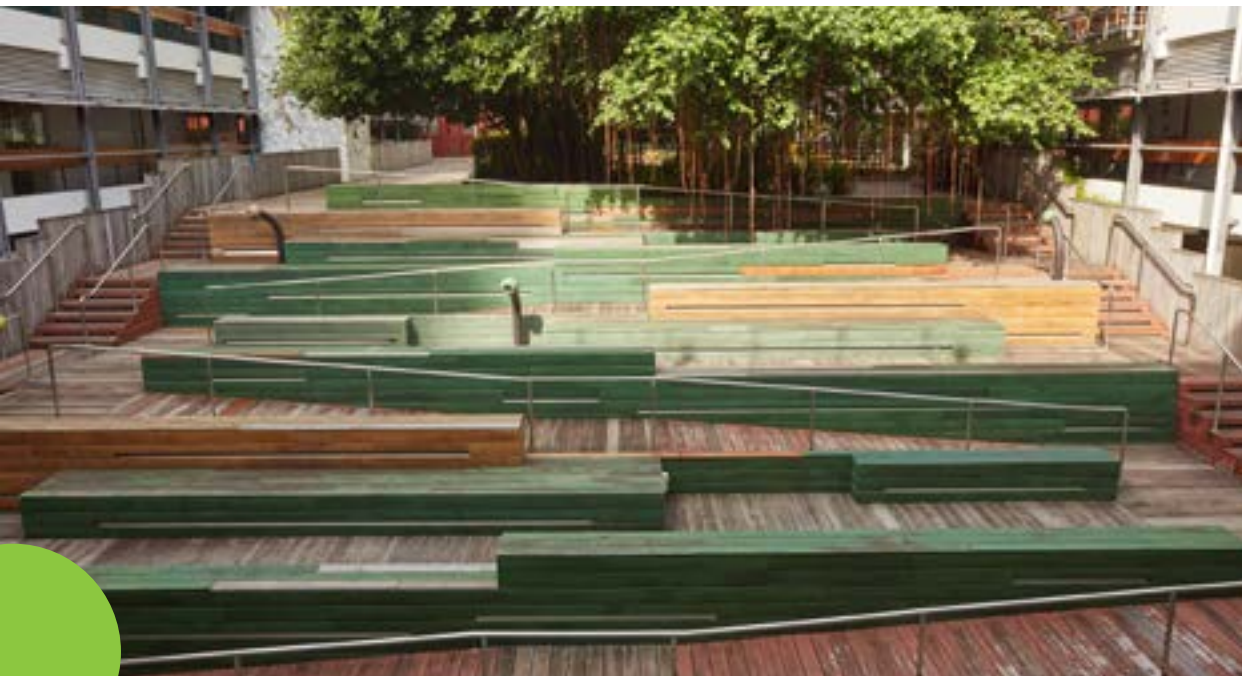
## SUITABLE FOR

- Live Performances
- Community Gathering
- Outdoor Workshop
- Film Screening

## RATES

- Morning 8am - 12pm: \$300
- Afternoon 1pm - 5pm: \$300
- Evening 6pm - 10pm: \$300
- Full Day: \$900

(Prices are subject to prevailing GST)





## EXAMPLES OF INCLUSIVE CATERERS

All food and beverage catering or delivery services are encouraged to be procured from the following list of caterers or food delivery companies.

### Within Enabling Village

1. Samsui Kitchen - <https://samsui.com.sg>

### Inclusive Food and Beverage Caterers

2. Bizlink Cafe (halal-certified) - [www.gift.org.sg/pages/fnb](http://www.gift.org.sg/pages/fnb)
3. Bliss Catering - [www.blisscatering.com.sg](http://www.blisscatering.com.sg)
4. Dignity Kitchen (halal-certified) - [www.projectdignity.sg](http://www.projectdignity.sg)

Stay tuned for more food and beverage offerings coming soon to Enabling Village!

- The Organiser shall liaise directly with the designated companies for its requirements.
- The set up for food and drinks must be at designated areas. Any food or drinks should be consumed outside the halls or rooms.



DINING | RETAIL | WELLNESS | SERVICES

# COME TO THE ENABLING VILLAGE



# ENABLING VILLAGE TOUR

Explore the inclusive stories and community at the Enabling Village. Embark on a 1.5-hour tour led by a guide with a disability, delving into the heart of Singapore's commitment to integration and empowerment. Witness the pioneering use of universal design principles, from inclusive preschools to specialised facilities for individuals with disabilities. Learn about SG Enable's initiatives and engage with assistive technology at Tech Able. Join us in celebrating inclusivity and the resilience of the human spirit.

\* Tour is suitable for anyone above the age of 7 | Public tour will only commence with a minimum of 4 participants. Group pricing from \$40/pax is available for corporates and schools, you can email [hello@luduslab.sg](mailto:hello@luduslab.sg) to enquire.



# DIRECTORY MAP

## Parking

CAR	MOTORCYCLE
\$0.60 per 30 minutes	\$0.65 per entry

There are parking spaces available within the Enabling Village. A grace period of 15 minutes is given to vehicles entering Enabling Village.

All rates are inclusive of GST.

## Complimentary Shuttle Bus Service

Complimentary shuttle bus services are available from Mondays to Fridays (excluding public holidays), between Enabling Village (Nest Block) and Redhill MRT (Exit A). Priority will be given to visitors with impaired mobility.



## Public Transportation

The nearest MRT station is Redhill Station, which is just 5 minutes' walk from the Enabling Village.



Contact Us At  
[facilities@ev.sg](mailto:facilities@ev.sg)