

# VENUE TOOLKIT

INCLUSIVE SPACES, INCLUSIVE EXPERIENCES

20 Lengkok Bahru, Singapore 159053

 <https://enablingvillage.sg/>

 EnablingVillageSG

 EnablingVillage



# CONTENTS

<b>About Us</b>	01
<b>Guide to Enabling Village</b>	02
<b>Venues</b>	
i.    UOB Ability Hub	03-04
ii.   Caregivers Pod	05
iii.  Grandstand @ Nest Block	06
iv.   Terrace	07
v.    Inclusive Training Facilities	08
<b>Meet Our Tenants</b>	09
<b>Inclusive Dining at Enabling Village</b>	10
i.    AMGD Superfood Restaurant	11
ii.   Art Bar	12
iii.  Bailey & Patch Cafe	13
iv.   EatTalk	14
v.    Mad Roaster	15
iv.   Postboy Coffee	16
v.    Samsui Kitchen	17
<b>Enabling Village Tour</b>	18
<b>Directory &amp; Parking Map</b>	19-21





## ABOUT US

A modern retreat surrounded by luxuriant greenery, the Enabling Village offers meeting spaces and facilities with accessibility features.

Situated in the charming estate of Redhill, the Enabling Village is only a short drive from the bustle of Orchard Road and a five-minute fully sheltered walk from Redhill MRT.

Whether you are planning to host a business meeting, seminar, conference, training programme, or recreational event, the Enabling Village has spaces to suit your needs.



## ACCESSIBILITY



VISITORS  
WITH LIMITED  
MOBILITY



HEARING  
AID USERS



BRAILLE  
USERS














SERVICE  
DOG USERS

## AWARDS & ACCOLADES



# Map of Enabling Village

## LEGEND

-  Parking
-  Elevator
-  Traffic Junction
-  Pedestrian Crossing
-  Bus Stop
-  Handicapped Parking Lot
-  Restroom
-  Drop Off
-  Footpath
-  Footpath with Enable Lane
-  Entrance/Exit



# UOB ABILITY HUB

APPROX. 205 SQM

Comfortable and spacious, this venue serves as an ideal meeting space for various events and activities. In addition to a ceiling drop-down projection screen and a ceiling-mounted projector, wide-screen monitors located near the theatre-style seating offer a closer view of the front screen. Refreshments can be conveniently served in the elegant foyer just outside the hall.



## DETAILS

### Seating Layout Capacity

Seminar: up to 180 pax (without stage)

up to 160 pax (with stage)

Cluster: up to 96 pax (with tables)

U-Shape: up to 40 pax

## SUITABLE FOR

- Presentations
- Lectures / Briefings
- Workshop
- Sports / Recreational Events
- Retail (e.g Pop Up Events and Gift Markets)

## BOOKING TIMESLOT

Available for booking Monday - Saturday (excluding Public Holidays)

	HALF DAY	FULL DAY
Morning	8:30am to 12:30pm	8:30am to 5:30pm
Afternoon	1:30pm to 5:30pm	
Evening	6:30pm to 10:30pm	1:30pm to 10:30pm

## AMENITIES

- Projector (HDMI)
- Sound System
- 2 wireless microphones
- Stage & Rostrum (upon request & subject to availability)
- Presenter Table & Chair
- Wireless Presenter
- Hearing Loop System
- Air-conditioned

## RATES

- Half Day: \$430
- Full Day: \$860

(Prices are subject to prevailing GST)





Contact us at [facilities@ev.sg](mailto:facilities@ev.sg)

Booking Terms & Conditions apply.

# UOB ABILITY HUB

APPROX. 205 SQM



# CAREGIVERS POD

APPROX. 45 SQM

Introducing The Caregivers Pod, a versatile multi-functional space available for public booking. While designed with caregivers in mind for organising peer support sessions and get-togethers, it's open to everyone seeking a welcoming environment for various gatherings.



## DETAILS

### Seating Layout Capacity

Sofa: up to 8 pax  
Seminar: up to 21 pax  
Cluster: up to 18 pax (with tables)  
Meeting Room: up to 14 pax (with tables)

## SUITABLE FOR

- Group Discussion
- Small Workshop
- Small Group Sharing
- Bonding / Recreational Activities

## BOOKING TIMESLOT

Available for booking Monday - Saturday (excluding Public Holidays)

	HALF DAY	FULL DAY
Morning	8:30am to 12:30pm	8:30am to 5:30pm
Afternoon	1:30pm to 5:30pm	1:30pm to 10:30pm*
Evening	6:30pm to 10:30pm*	

## AMENITIES

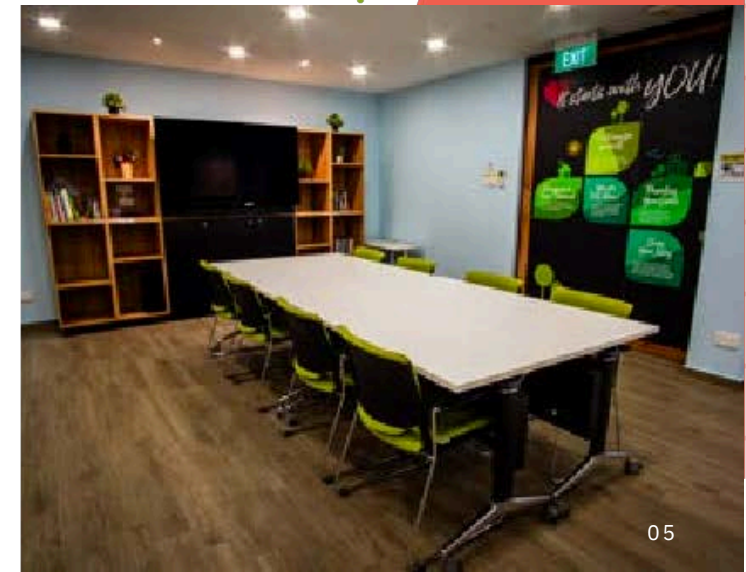
- 1 TV (HDMI) with soundbar
- 1 TV Remote

## RATES

Half Day: \$180

Full Day: \$360

(Prices are subject to prevailing GST)





# GRANDSTAND @ NEST BLOCK

APPROX. 70 SQM

Grandstand offers a comfortable space for casual conversations, informal meetings, or laid-back socialising. Perfect for small events, workshops, or informal celebrations, our indoor venue provides a warm and inviting atmosphere to ensure your occasions are memorable. Explore the ideal setting for a casual and enjoyable experience with your group.

## DETAILS

**Seating Layout Capacity**  
up to 35 pax

## AMENITIES

- 1 Projector with 1 Screen (HDMI)
- Sound System
- 2 wireless microphones
- Wireless Presenter
- Hearing Loop System Rostrum

## SUITABLE FOR

- Group Discussion
- Small Workshop
- Small Group Sharing
- Bonding / Recreational Activities

## RATES

Half Day: \$180

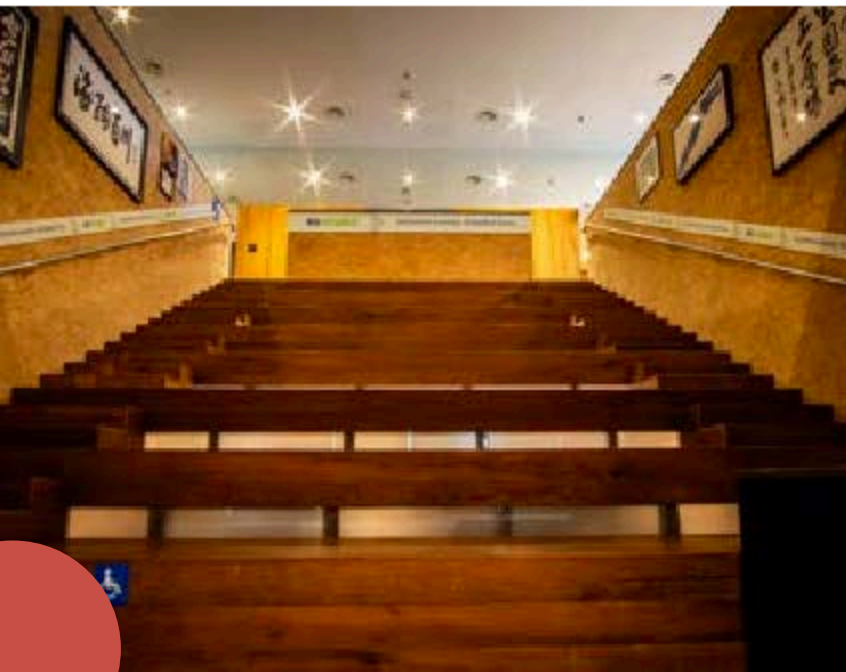
Full Day: \$360

(Prices are subject to prevailing GST)

## BOOKING TIMESLOT

Available for booking Monday - Saturday (excluding Public Holidays)

	HALF DAY	FULL DAY
Morning	8:30am to 12:30pm	8:30am to 5:30pm
Afternoon	1:30pm to 5:30pm	1:30pm to 10:30pm*
Evening	6:30pm to 10:30pm*	





# TERRACE

Experience the Terrace, located in the Playground block, a universally designed space where all are welcome. With a seating capacity of 150, it's the perfect venue for you to bring your events and gatherings to life!

Booking Terms & Conditions apply.

## DETAILS

### Seating Layout Capacity

up to 150 pax

## RATES

- Half Day: \$300
- Full Day: \$600

(Prices are subject to prevailing GST)

## SUITABLE FOR\*

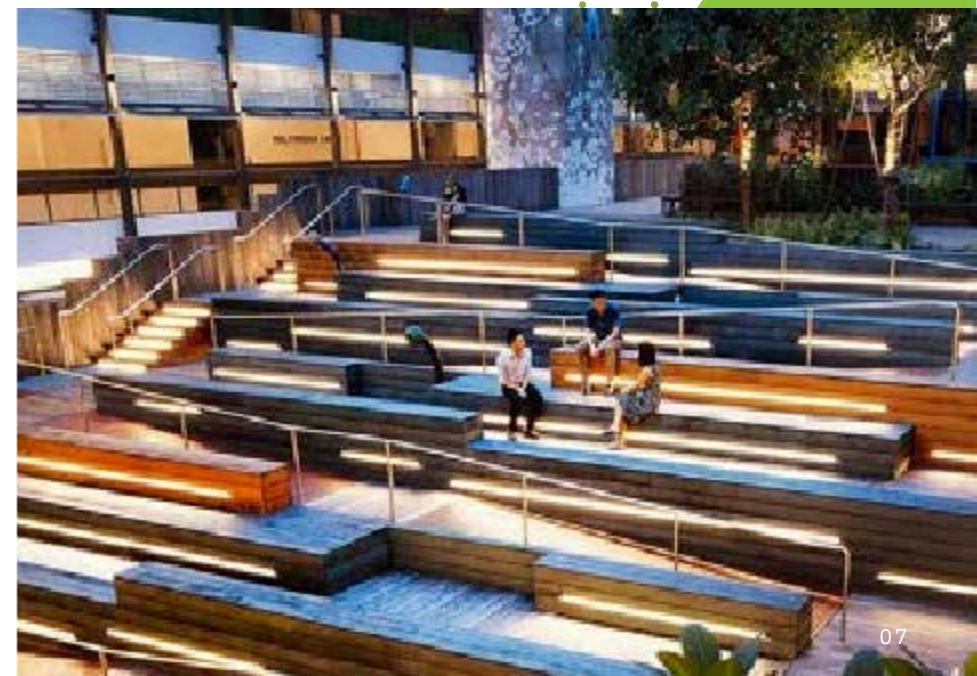
- Live Performances
- Community Gathering
- Outdoor Workshop
- Film Screening

\*Organizers have to engage their own vendors

## BOOKING TIMESLOT

Available for booking Monday - Saturday (excluding Public Holidays)

	HALF DAY	FULL DAY
Morning	8:30am to 12:30pm	8:30am to 5:30pm
Afternoon	1:30pm to 5:30pm	1:30pm to 10:30pm*
Evening	6:30pm to 10:30pm*	



# Inclusive Training Facilities

Enabling Academy has a suite of inclusive classrooms ranging from approximately 52 to 95 sqm, which could accommodate up to 112 participants.

Designed based on universal design principles, the classrooms support an accessible learning environment for all. They include flexible layouts with movable furniture, as well as appropriate lighting and acoustics to support diverse learning needs.

## DETAILS

### Seating Layout Capacity

- Boardroom: up to 20 pax
- Cluster: up to 24 pax
- Classroom: up to 18 pax

## SUITABLE FOR

- Training Sessions
- Meetings
- Group discussions
- Bonding/Recreational Activities

## BOOKING TIMESLOT

Available for booking Monday – Saturday  
(excluding Sundays & Public Holidays)

	HALF DAY	FULL DAY
Morning	0900-1300	0900-1800
Afternoon	1400-1800	1400-2200*
Evening	1900-2200*	

\*Not available on Saturday

## AMENITIES

- **Accessible design:** Wheelchair-accessible toilets and barrier-free layouts
- **Audio features:** Wireless microphones\* and a hearing loop system
- **Visual and learning aids:** Ceiling-mounted LCD projector with screen (HDMI) and Smartboard\*
- **Adjustable lighting:** Dimmable lights
- **Connectivity and collaboration:** Wi-Fi access and flipcharts with markers to support group discussions and learning

*\*For selected classrooms only*

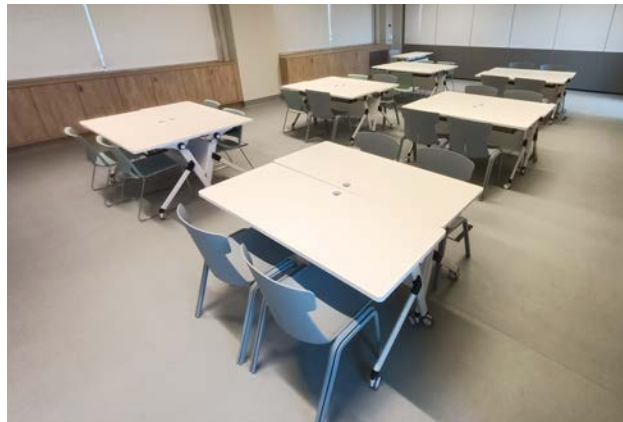
## RATES

- Half Day: Between \$120 to \$180
  - Full Day: Between \$240 to \$360
- (Prices are subject to prevailing GST)*

Boardroom Setup



Cluster Setup



Classroom Setup

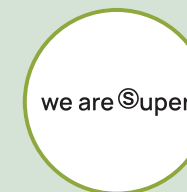






DINING | RETAIL | WELLNESS | SERVICES

# MEET OUR TENANTS



# INCLUSIVE DINING EXPERIENCES AT ENABLING VILLAGE



- The Organiser shall liaise directly with the designated companies for its requirements and charges.
- The set up for food and beverage must be at designated areas.



Catering

Dining

# AMGD SUPERFOOD RESTAURANT

## ABOUT

AMGD Superfood Restaurant offers wholesome, Halal-certified meals with nutritious rice bowls, pastas, and salads – freshly prepared for guilt-free enjoyment. The restaurant also supports inclusion by providing meaningful employment to persons with disabilities.



### Operating hours:

Monday to Sunday, 7.00am – 9.00pm

### Location:

Academy, #01-10

### Estimated Cost:

Around \$10 – \$20 per person

## SOCIALS

Instagram: [@amgd.sg](https://www.instagram.com/amgd.sg)  
Facebook: [AMGD Global](https://www.facebook.com/AMGDGlobal)  
Website: [AMGD Singapore](https://www.amgd.sg)





# ART BAR

## ABOUT

Art Bar is a community initiative by Starbucks Singapore and Autism Resource Centre, providing young adults with autism hands-on training in operating a coffee stand.



**Operating hours:**  
Monday to Saturday, 10.00am – 6.00pm

**Location:**  
Village Green, #01-07 (inside The Art Faculty)

**Estimated Cost:**  
Around \$5 – \$10 per person

## SOCIALS

Instagram: [@theartfacultysg](https://www.instagram.com/theartfacultysg)  
Facebook: [The Art Faculty](https://www.facebook.com/TheArtFaculty)





# BAILEY & PATCH

## ABOUT

Bailey and Patch is a pet-friendly café offering hearty meals, brunch items, specialty coffee, and baked treats. The café empowers persons with disabilities through training and employment in pet grooming, baking, and food & beverage services.



**Operating hours:**  
Monday to Sunday, 10.00am – 10.00pm

**Location:**  
Academy, #01-17

**Estimated Cost:**  
Around \$10 – \$15 per person

## SOCIALS

📷 Instagram: [@baileyandpatchcafe](#)  
📘 Facebook: [Bailey & Patch Cafe](#)  
🌐 Website: [Bailey & Patch](#)





# EATTALK

## ABOUT

EatTalk creates opportunities and empowers our community by including individuals with special needs who take on meaningful roles. They strive to build an inclusive environment that fosters confidence and shows that people with special needs are valuable, contributing members of society in our community every single day.



### Operating hours:

Monday to Friday: 8.00am – 8.00pm,  
Saturday: 8.00am – 4.00pm  
Closed on Sundays & Public Holidays

### Location:

Vista, #01-01

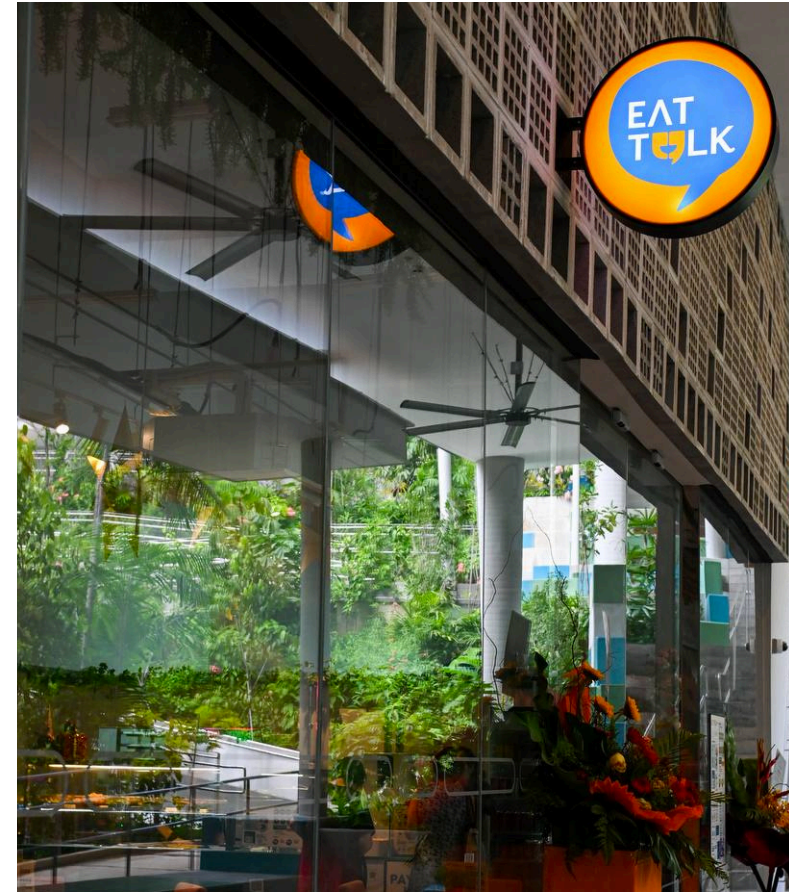
### Estimated Cost:

Around \$5 – 10 per person

### SOCIALS

Instagram: @eattalk.sg

Facebook: eattalksg





Catering

Dining

# MAD ROASTER

## ABOUT

Mad Roaster serves handcrafted coffee and bakes with a social mission – each cup helps support the livelihoods of persons with disabilities and refugees through meaningful training and employment.



**Operating hours:**  
8.00am – 9.00pm

**Location:**  
Outpost, #01-20

**Estimated Cost:**  
Around \$5 – \$20 per person

## SOCIALS

Instagram: [@madroaster](#)  
Facebook: [Mad Roaster](#)  
Website: [Mad Roaster](#)



# POSTBOY COFFEE

## ABOUT

Postboy Coffee is a specialty café built around moments of pause and reflection. With every cup comes an invitation to write a postcard to your future self. Each design supports inclusive art collaborations, while workshops extend the experience — blending coffee, creativity, and mindful connection beyond the cup.



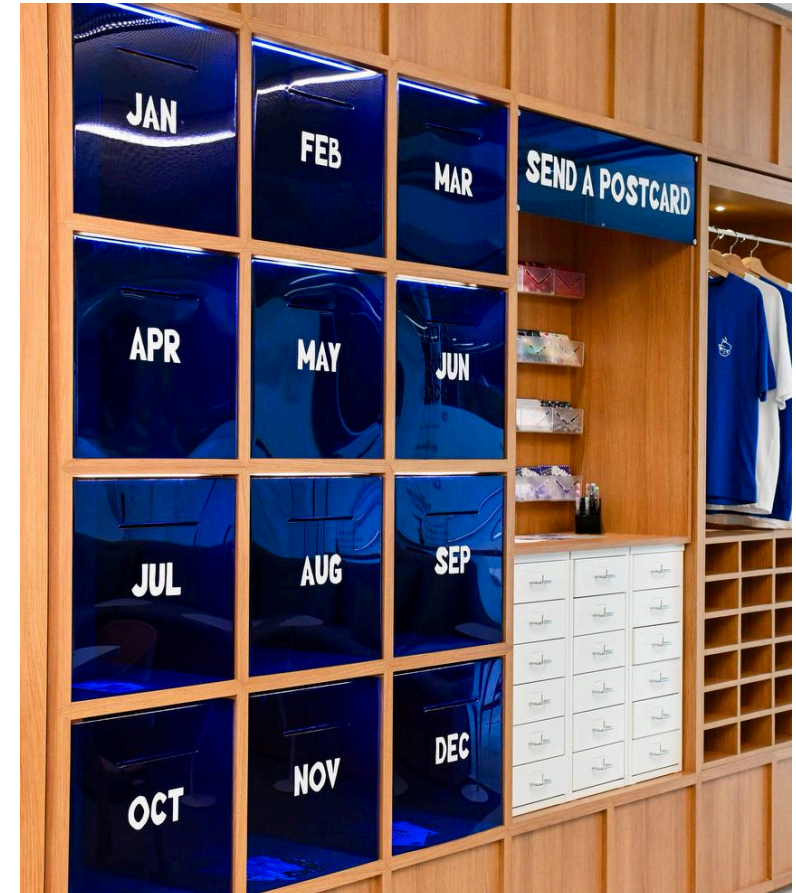
**Operating hours:**  
Monday to Sunday 10.00am - 6.00pm

**Location:**  
Vista, #02-01/02/03

**Estimated Cost:**  
Around \$5 - 10 per person

## SOCIALS

Instagram: [@postboycoffee](#)  
Website: [Postboy\\_Coffee](#)





# SAMSUI KITCHEN

## ABOUT

Samsui Kitchen, the social enterprise arm of Soup Restaurant Group, offers catering services including buffet-style meals, canapés, and light bites tailored for events. Based in Enabling Village since 2019, Samsui Kitchen empowers persons with disabilities through skills training and meaningful employment.



**Operating hours:**  
Monday to Sunday, 5.00am – 6.00pm

**Location:**  
Academy, #01-16

## SOCIALS



Facebook: [Samsui Supplies and Services](#)



Website: [Samsui Supplies & Services](#)





# ENABLING VILLAGE TOUR

Explore the inclusive stories and community at the Enabling Village. Embark on a 1.5-hour tour led by a guide with a disability, delving into the heart of Singapore's commitment to integration and empowerment. Witness the pioneering use of universal design principles, from inclusive preschools to specialised facilities for individuals with disabilities. Learn about SG Enable's initiatives and engage with assistive technology at Tech Able. Join us in celebrating inclusivity and the resilience of the human spirit.

\* Tour is suitable for anyone above the age of 7. Public tour will only commence with a minimum of 4 participants. Group pricing from \$40/pax is available for corporates and schools, you can email [hello@luduslab.sg](mailto:hello@luduslab.sg) to enquire.





# ACCESSIBLE BUS ROUTE

## Enabling Village (10431)

139

## Opp Enabling Village (10439)

139

## Blk 72 (10459)

63

## Bt Merah Sec Sch (10109)

14, 147, 196, 197, 855, 961, 961M

## Opp Bt Merah Sec Sch (10101)

14, 123, 139, 147, 153, 196, 197, 198, 855, 961, 961M



Contact us at  
[facilities@ev.sg](mailto:facilities@ev.sg)

Booking Terms & Conditions apply.

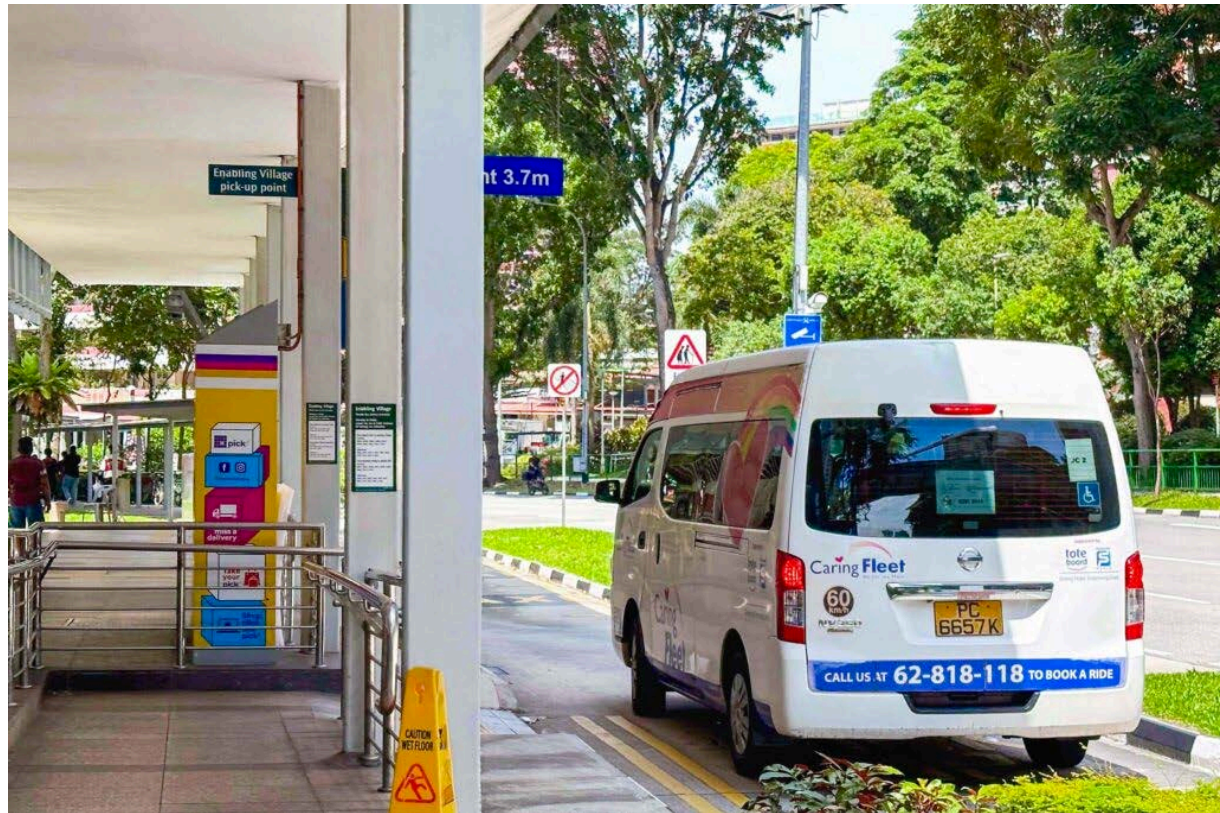
# DIRECTORY MAP

## Complimentary Shuttle Bus Service

Complimentary shuttle bus services are available from Mondays to Fridays (excluding public holidays), between Enabling Village (Nest Block) and Redhill MRT (Exit A). Shuttle service frequency is every 20 minutes. Priority will be given to visitors with impaired mobility.

## Public Transportation

The nearest MRT station is Redhill Station, which is just 5 minutes' walk from the Enabling Village.

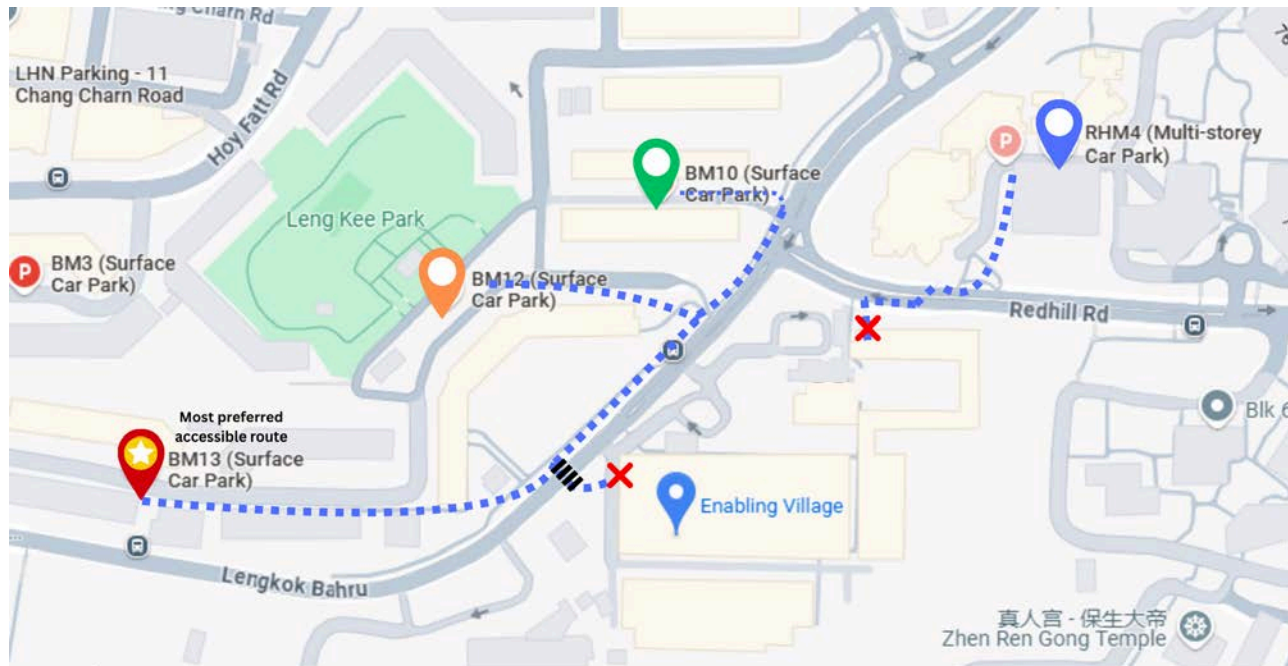


Contact us at  
[facilities@ev.sg](mailto:facilities@ev.sg)

Booking Terms & Conditions apply.



# PARKING MAP AND ALTERNATIVE CARPARKS



## Legend

<b>BM13 (Surface Car Park)</b> ★	<b>BM12 (Surface Car Park)</b>	<b>BM10 (Surface Car Park)</b>	<b>RHM4 (Multi-Storey Car Park)</b>
Lengkok Bahru, #43-48 S(150043)	55 Lengkok Bahru, S(151055)	56/57 Lengkok Bahru S(150056)	74 Redhill Rd, S(150074)
5-Minute Walk	4-Minute Walk	3-Minute Walk	5-Minute Walk

## Parking

### CAR

\$0.60 per 30 minutes

### MOTORCYCLE

\$0.65 per entry

There are Wheelchair-friendly parking spaces available within the Enabling Village. A grace period of 15 minutes is given to vehicles entering Enabling Village.

All rates are inclusive of GST.

Kindly refer to the diagram for alternative carparks in the vicinity should the Enabling Village carpark be full, and the most preferred accessible route.

Contact us at  
[facilities@ev.sg](mailto:facilities@ev.sg)

Booking Terms & Conditions apply.



# THANK YOU

and we look forward to seeing you at the Enabling Village!

Any questions? Contact us at [hello@ev.sg](mailto:hello@ev.sg)